

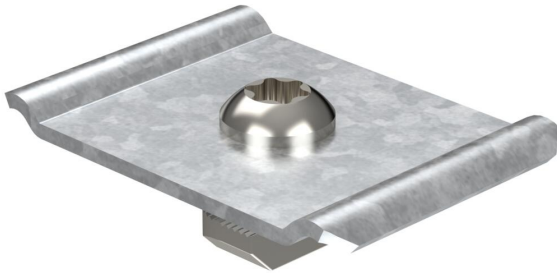
Technical data sheet

Fastening set mesh cable tray, PV mounting system, flat roof

Item number: 5901770



Fastening set for fastening mesh cable trays to support profiles type TPF 35 for PV mounting systems for flat roofs. Consisting of clamping piece, sliding nut and screw.



- St** Steel
- FT** Hot-dip galvanised

Master data

Item number	5901770
Description 1	Fastening set mesh cable tray
Description 2	for flat roof system
Manufacturer	OBO
Dimension	60x40x20
Colour	zinc
Material	Steel
Surface	Hot-dip galvanised
Surface standard	DIN EN ISO 1461
Smallest sales unit	20
Unit of quantity	Piece
Weight	5 kg
Weight unit	kg/100 pc.
CO Footprint (GWP) Cradle-to-Gate	0,17 kg COe / 1 Piece

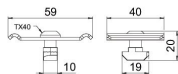
Technical data sheet

Fastening set mesh cable tray, PV mounting system, flat roof

Item number: 5901770



Dimensions



Length	40 mm
Width	58.99 mm
Height	20.4 mm

Technical data

Thread metric	8
Bolt	T40
Accessories	yes
Spare part	no
Type of accessory Accessory/ spare parts für renewable energy generation	Other
Suitable for a type of renewable energy generation	Photovoltaics