

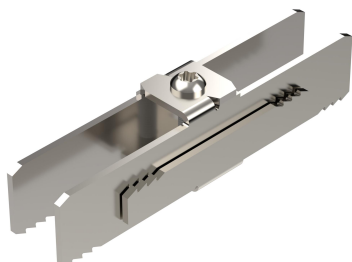
Technical data sheet

Straight connector support profile, flat roof

Item number: 5901180



Straight connector for connecting support profiles type TPF 35 for photovoltaic flat roof systems. Fastening with pre-installed M6 screw, screwable with Torx 30 key.



St Steel

DD Strip galvanised zinc/aluminium, Double Dip

Master data

| | |
|---------------------|---|
| Item number | 5901180 |
| Description 1 | Straight connector |
| Description 2 | for truss profile |
| Manufacturer | OBO |
| Dimension | 44x36x160 |
| Colour | zinc |
| Material | Steel |
| Surface | Strip galvanised zinc/aluminium, Double Dip |
| Surface standard | DIN EN 10346 |
| Smallest sales unit | 20 |
| Unit of quantity | Piece |
| Weight | 36.8 kg |
| Weight unit | kg/100 pc. |

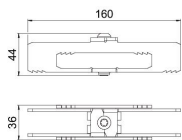
Technical data sheet

Straight connector support profile, flat roof

Item number: 5901180



Dimensions



| | |
|--------|---------|
| Width | 36.4 mm |
| Height | 44.4 mm |

Technical data

| | |
|---|--------------------|
| With fastening material | no |
| Depth | 160 mm |
| Adjustable | no |
| Photovoltaic connection and fastening element version | Straight connector |
| Torsion spring stiffness (k.rot.y) | 1000 |
| With module earthing | no |