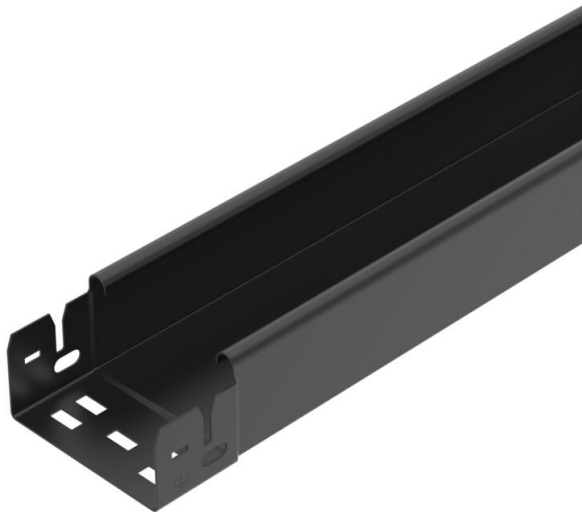


Technical data sheet

Cable tray MKS-Magic® 60, unperforated, black

Item number: 6062979



Unperforated cable tray with integrated quick fastening system. Black coated. Magnetic shield insulation without cover 20 dB, with cover 50 dB.



St	Steel
P135	PES135 - Polyester

Master data

Item number	6062979
Type	MKSMU 610 FSK SW
Description 1	Cable tray MKSMU
Description 2	unperforated, quick connector
Manufacturer	OBO
Dimension	60x100x3050
Colour	Jet black; RAL 9005
Material	Steel
Surface	PES135 - Polyester
Surface standard	
Smallest sales unit	6
Unit of quantity	Metre
Weight	198.46 kg
Weight unit	kg/100 m
CO Footprint (GWP) Cradle-to-Gate	4,4707 kg COe / 1 Meter

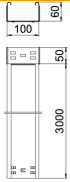
Technical data sheet

Cable tray MKS-Magic® 60, unperforated, black

Item number: 6062979



Dimensions



Dimension	60 x 100
Length	3,050 mm
Width	100 mm
Height	60 mm
Plate thickness	1 mm
Dimension B	100 mm
Maß W	100 mm

Technical data

Connector version	Integrated connector
Mounting system fastening type	Floor Ceiling Wall
Maintain electrical functions	no
With cover	no
Mounting perforation in base	no
NATO hole pattern	no
Usable cross-section	58 cm ²
Usable cross-section	5800 mm ²
Rustproof steel, pickled	no
Side perforation	no
Wide-span version	no
Usable length	3000 mm
Type of connector, cable support system	Click fastening

Loads

Insertable support spacings, min.	1.5 m
Insertable support spacings, max.	2.5 m
Support spacing 1.5 m	1.5 kN/m
Support spacing 1.75 m	1.25 kN/m
Support spacing 2.0 m	1 kN/m
Support spacing 2.5 m	0.5 kN/m